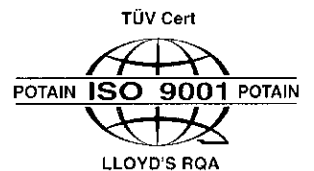


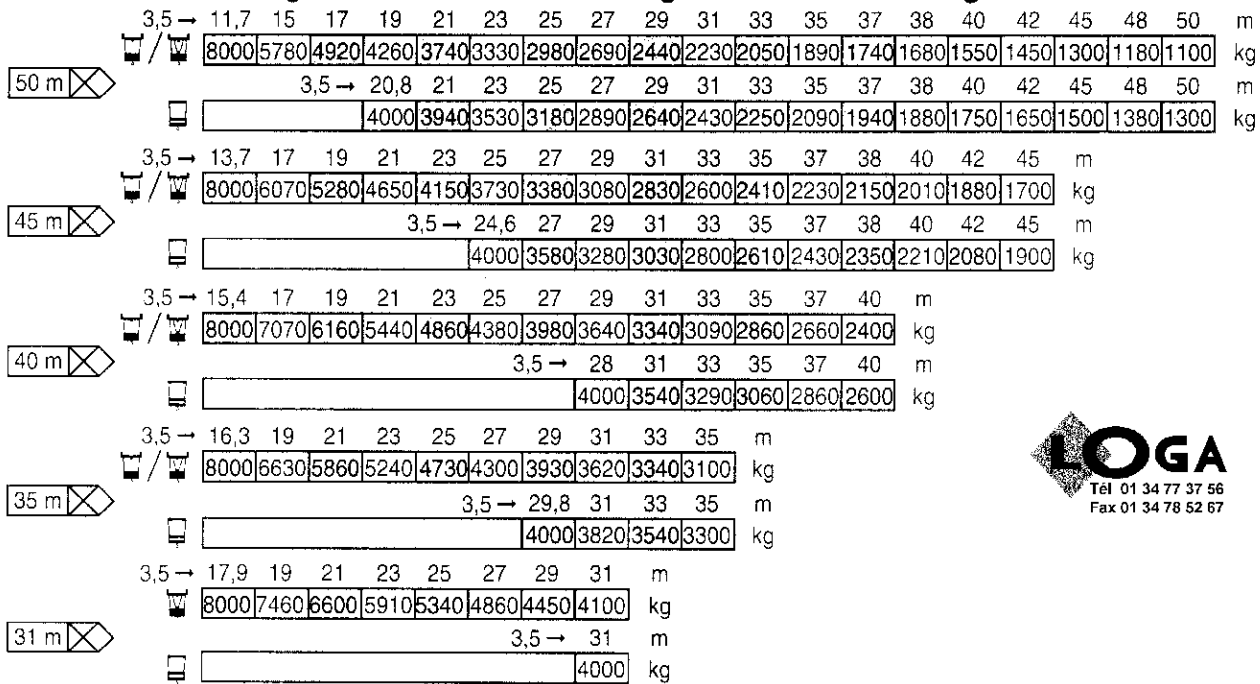
GTMR 386 A

LIF 1

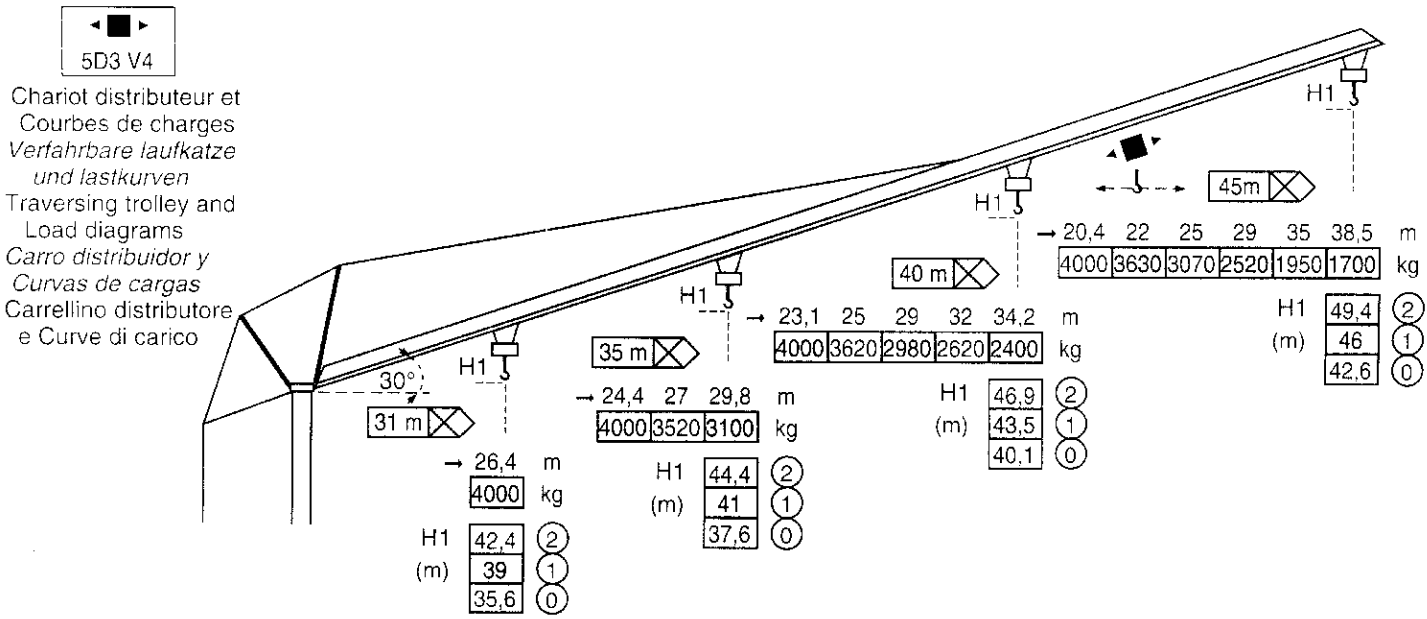
POTAIN



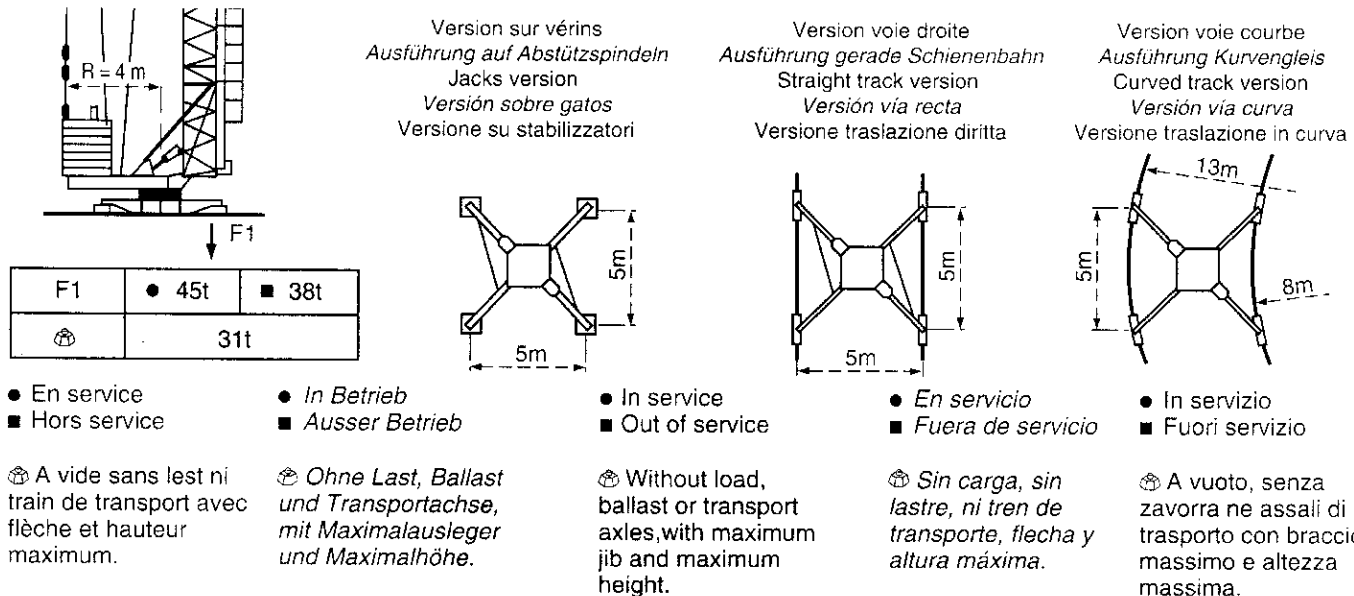
Courbes de charges - Lastkurven - Load diagrams - Curvas de cargas - Curve di carico





















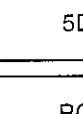





Flèche relevée - Ausleger in Steilstellung - Luffing jib - Flecha izada - Braccio impennato



Réaction - Eckdrücke - Reactions - Reacciones - Reazioni



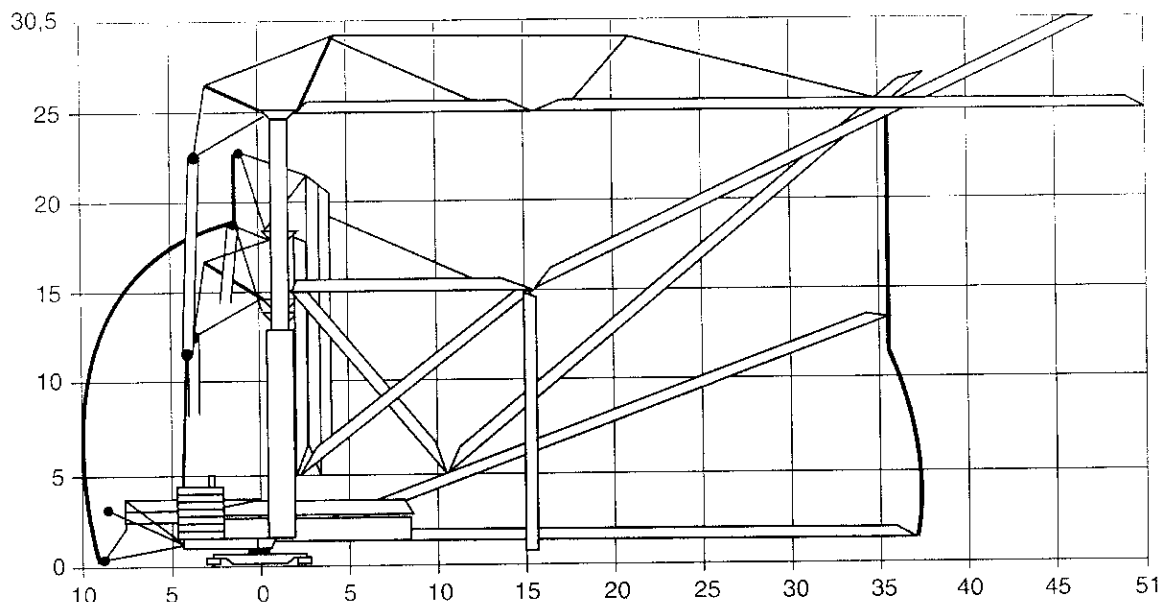
Mécanismes - Antriebe - Mechanisms - Mecanismos - Meccanismi

				m/min	kg	ch -PS hp	kW
 <p>Tél 01 34 77 37 56 Fax 01 34 78 52 67</p> <p>Levage Heben Hoisting Elevación Sollevamento</p>	33 PC 20 			5,4	4000	33	24
				30	4000		
				60	2000		
				2,7	8000		
				15	8000		
				30	4000		
	33 LVF 20 			5,4	4000	33	24
				31	4000		
				62	2000		
				2,7	8000		
				15,5	8000		
				31	4000		
Distribution - <i>Katzfahren</i> - Trolleying <i>Distribución</i> - Distribuzione		5D3 V4	15-30-58		5,5	4	
Orientation - <i>Schwenken</i> - Slewing <i>Orientación</i> - Rotazione		RCV 62	0 → 0,8 tr/min - U/min - rpm		8	5,9	
Translation - <i>Kranfahren</i> - Travelling <i>Traslación</i> - Traslazione	 R ≥ 8m	Standard	25		2x4	2x3	
Réseau - <i>Netzstrom</i> - Mains supply - <i>Red</i> - Rete elettrica					CEI 38 IEC 38	400V(+6%-10%) 50 Hz	
Puissance électrique nécessaire - <i>Anschlusswert</i> - Necessary electric power <i>Potencia electrica necesaria</i> - Potenza elettrica necessaria					50 kVA		
Groupe électrogène - <i>Stromaggregat</i> - Generator set - <i>Grupo electrogeno</i> - Gruppo elettrogeno					*		

*Nous consulter - *Auf Anfrage* - Consult us - *Consultarnos* - Consultateci

Conforme aux directives CEE 84/534 et 87/405 sur le niveau acoustique - *Gemäss EWG-Richtlinien 84/534 und 87/405 für den Schall- Leistungspegel*
In compliance with the EEC 84/534 and 87/405 Instructions on noise level - *Conforme con las directivas CEE 84/534 y 87/405 sobre el nivel acustico*
Conforme alle direttive CEE 84/534 e 87/405 sul livello acustico

Montage - Montage - Erection - Montaje - Montaggio

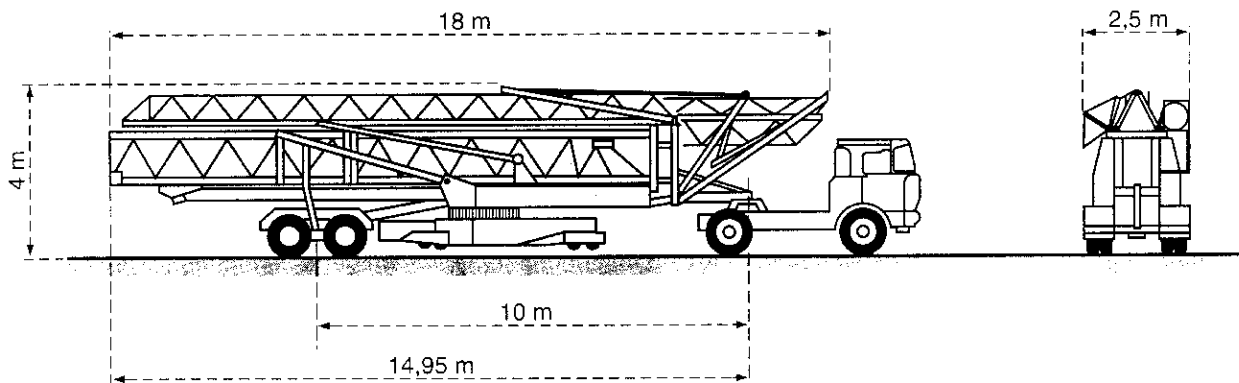


POTAIN  GTMR 386 A

Transport - *Transport* - Transport - *Transporte* - Trasporto



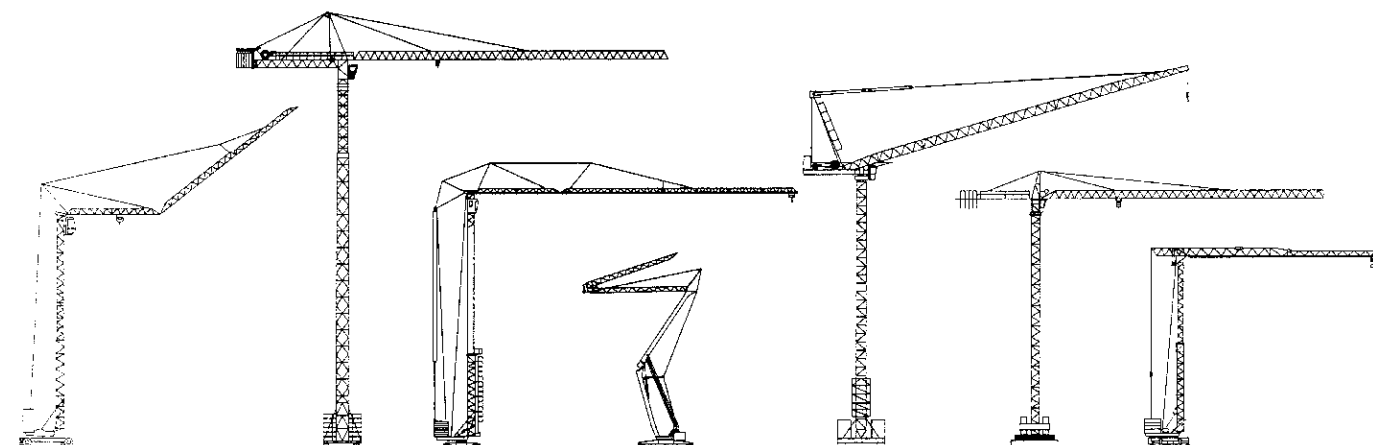
S4/46A (25 km/h)
S5A/82B (60-80 km/h)



Version semi-portée
Ausführung als Sattelaufliieger
Tractor towed version
Versión en semi-remolque
Versione semi rimorchio



NF E 52081 - 82
DIN 15018.H1 B3



Document pour usage commercial uniquement - *Benutzung dieser Unterlagen nur für Verkaufszwecke* - Document for commercial use only -
Documento para uso comercial unicamente - Documento per uso commerciale solamente

Copyright.Reproduction interdite © POTAIN 1994

POTAIN

GRUPE *LEGRIS* INDUSTRIES

18.Rue de Charbonnières, B.P. 173-F 69132 ECULLY Cedex
Tél. 72.20.20.20 - Télèx 375 213 - Fax 72.20.20.00

POTAIN GmbH Deutschland Tel : 06.105.704.0
POTAIN U.K. Great Britain Tel : 0895.44.52.61
Simma POTAIN Italia Tel : 02.97.96.71
POTAIN Portugal Portugal Tel : 02.968.08.89

GTMR 386 A

Réf. 1994.44 LIF 1